

特集 Special Topics

市の職員の給与・人事の状況を公開 給与の仕組みや水準、職員人事の運営状況を公表します

清瀬市の職員の給与や休暇などの勤務条件は、市議会で定める条例や、これに基づく規則などで決定されます。「清瀬市人事行政の運営等の状況の公表に関する条例」に基づき、市職員の給与や人事の運営状況を公表します。

市職員の給与の状況

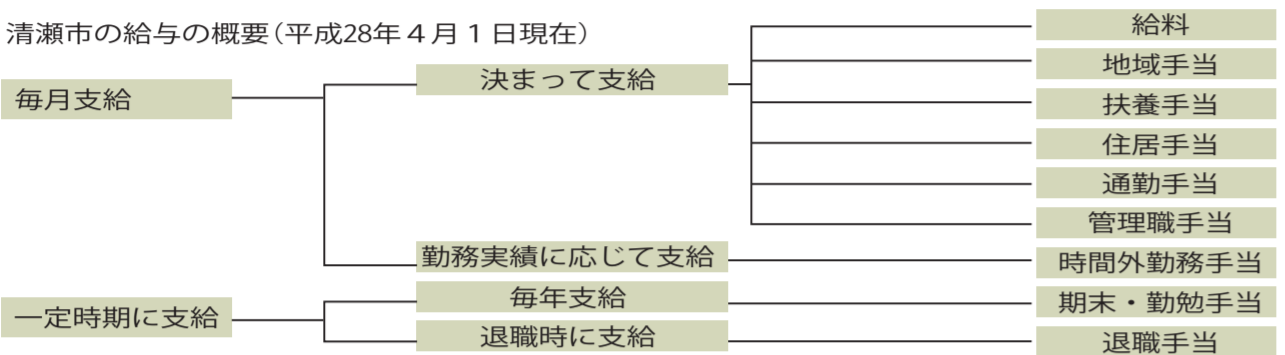


Table 1: Personnel costs (Personnel costs, Personnel costs (B/A), etc.)

Table 2: Salary and fee status (Salary, Personnel costs, etc.)

Table 3: Average salary, monthly amount, and average age (Average salary, Monthly amount, etc.)

Table 4: Initial salary status (Initial salary, etc.)

Table 5: Experience-based salary status (Experience-based salary, etc.)

Table 6: Las Pires Index (Las Pires Index, etc.)

Table 7: General administrative staff status (General administrative staff, etc.)

Table 8: Salary reflection status (Salary reflection, etc.)

9 職員手当の状況 (平成28年4月1日現在)

Table 9: Staff allowance status (Staff allowance, etc.)

Table 10: Special position remuneration status (Special position remuneration, etc.)

Table 11: Departmental staff numbers and main increase/decrease reasons (Departmental staff numbers, etc.)

Text regarding special position remuneration details.

10 特別職の報酬等の状況について (平成28年4月1日現在)

Table 10: Special position remuneration status (Special position remuneration, etc.)

11 部門別職員数の状況と主な増減理由

Table 11: Departmental staff numbers and main increase/decrease reasons (Departmental staff numbers, etc.)

Text regarding staff numbers and reasons for change.

職員人事の状況

1 職員の任免及び職員数に関する状況

Table 1: Staff appointment and dismissal status (Staff appointment and dismissal, etc.)

2 職員の競争試験及び選考の状況

Table 2: Staff competitive examination and selection status (Staff competitive examination, etc.)

3 職員の勤務時間その他の勤務条件の状況

Text regarding working hours and other conditions.

4 職員の分限及び懲戒処分 (平成27年度)

Table 4: Staff disciplinary actions (Disciplinary actions, etc.)

5 職員の服務の状況 (平成27年度)

Table 5: Staff service status (Staff service, etc.)

6 職員の研修及び勤務成績の評価の状況

Table 6: Staff training and performance evaluation status (Staff training, etc.)

7 職員の福祉及び利益の保護の状況

Table 7: Staff welfare and protection status (Staff welfare, etc.)

8 職員の休業の状況

Table 8: Staff leave status (Staff leave, etc.)

清瀬リハビリテーション病院 (Rehabilitation Hospital)

上宮園 (Ukyu-en) - Special care elderly home

相続全般お手伝いいたします! (Estate planning services)

新築価格の半額で、あと30年安心な住まいへ (New construction advertisement)